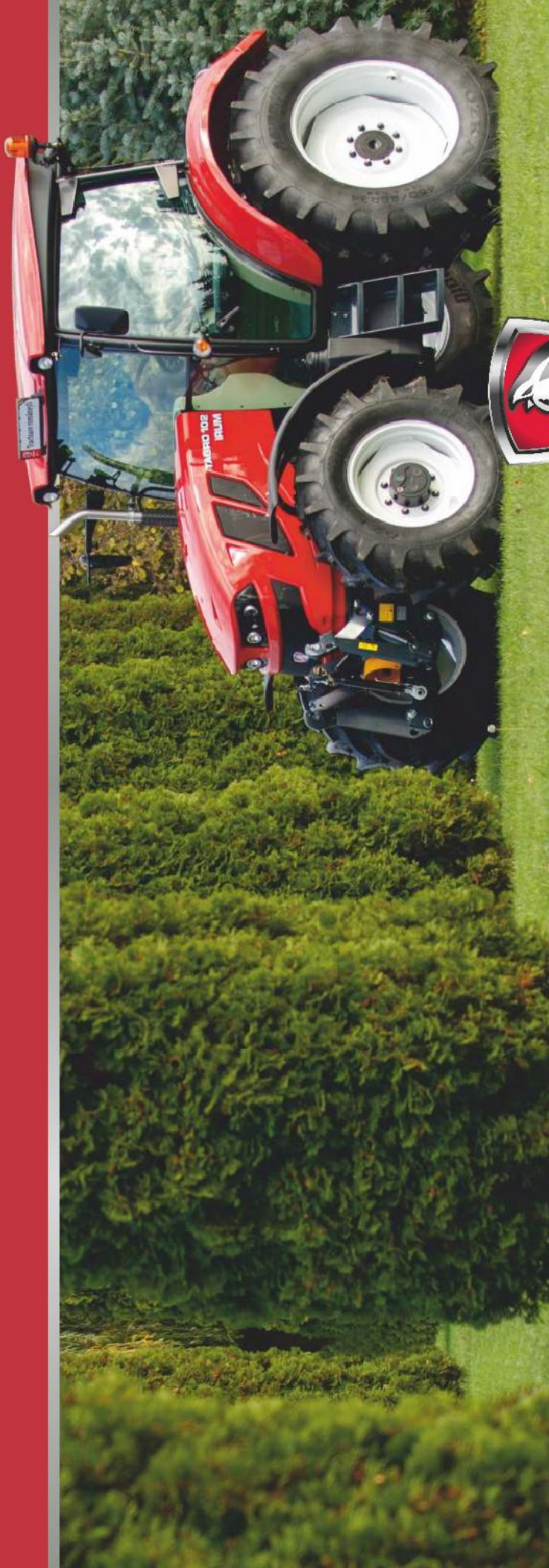


www.irusm.ro

AGRICULTURAL TRACTORS AND EQUIPMENT



IRUM
European
tractors

Why IRUM?

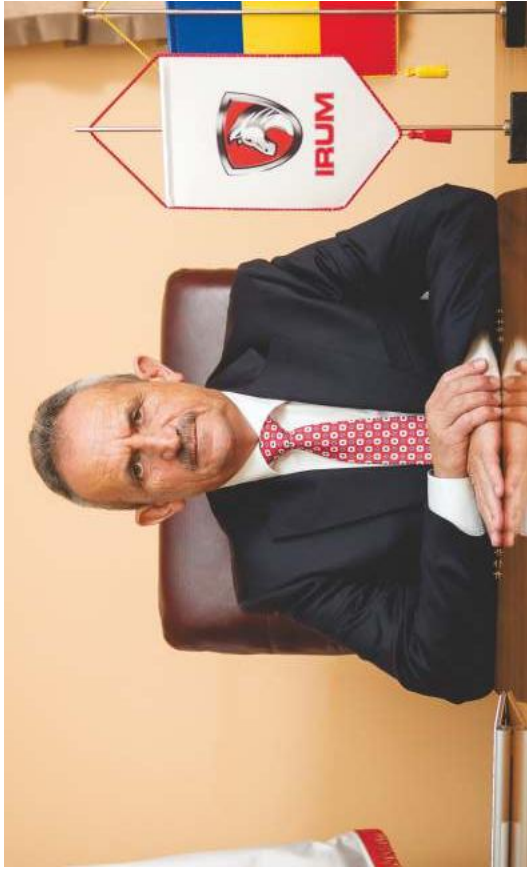
safety | continuity | efficiency | custom solutions | comfort

SC IRUM SA
Str. Avante Sever, nr. 6, Reghin, jud. Mures, România
Tel.: 004 0365 450 001
Fax: 004 0377 101 431
E-mail: agro@irusm.ro
www.irusm.ro
facebook.com/irusm:reghin



VI - 01.2023

www.irusm.ro



Personally, I have the honour and pleasure to run IRUM, the only factory in the country specialized in the production of agricultural tractors and forestry equipment (TAF).

IRUM Reghin was founded in 1953, with the purpose of manufacturing, maintaining and repairing agricultural and forestry equipment and mechanisms. Since 1969, IRUM began to produce forest tractors and quickly became one of the best manufacturers of such equipment in this part of Europe.

After its full privatization, with MAVIPROD as the main shareholder, IRUM went through successive phases of modernization and retrofitting, qualification of the workforce and expansion of production capacities. IRUM currently has state-of-the-art technology, and the results very soon became visible. Thus, we can be proud of the fact that our TAFs have come to perform in distant countries or in countries with a long tradition in forest equipment and logging.

The first attempt to enter the agricultural sector was in 2007. Having experience in the construction of forestry tractors, but also due to the desire to meet the Romanian farmers, in 2010 we decided to develop the business also towards the agricultural tractors' area, a totally new and different sector than what we had done before. Thus, we started cooperation with Belarus Tractor and a new project was launched: assembling in Reghin of agricultural tractors under the licence offered by the Belarusian company. The decision was related to the fact that this was a stable partner with a lot of experience and already had a portfolio of products verified and appreciated on the market, which could meet very well the requirements related to the value for money ratio.

The decision to collaborate with Belarus was an inspired one, the results were good, but the desire to produce a Romanian agricultural tractor remained. After a break of

over 10 years and many efforts, through the iFOR Research and Development Centre, we launched the new Romanian Agricultural Tractor – TAGRO.

Our product is a competitive one, which was designed for all farmers, especially for small and medium-sized ones, and the market is intended to be both in Romania and in other countries in Europe. Its performance meets the requirements of the world market, having a competitive price-quality ratio.

In 2020 we launched a new range of IRUM TAG tractors, designed for family farms. This approach is part of our strategy to support the revival of Romanian agriculture. The new range can be used with maximum efficiency in works in the field of vegetable growing, greenhouses, viticulture, fruit growing or in the field, including mowing or raking.

I invite you, with modesty, but also with honour, to try our agricultural tractors.

IRUM, together with me, guarantees you quality, reliability and simplicity in operation and maintenance. Through the production of machinery and spare parts of the IRUM factory, the Mavi network that provides technical solutions for any machine, the iFOR Research and Development Centre, the over 600 professionally trained people, as well as through the TAF and TAGRO brands, the Mavi group contributes significantly to the development of Romania.

Chairman of the Management Board
General manager of SC IRUM SA
Eng. Mircea Eugen Oltean

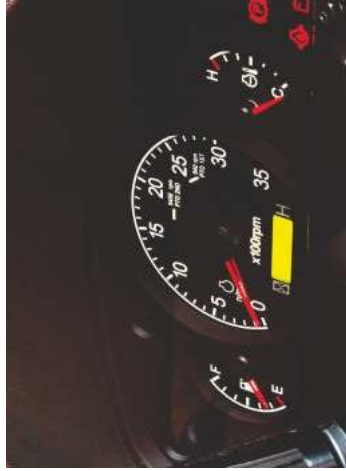


TECHNICAL DETAILS

TAGRO 102

Diesel, F5 FTP (Flat Power Train), 4 cylinders in-line, common rail, turbocharger and intercooler

| | |
|---|--|
| Stage IV final | 3,387 cm ³ |
| Engine power | 102 HP (75 kW) at 2200 rot/min |
| Maximum torque | 430 Nm at 1400 rot / min |
| Air filter | Dried |
| Fuel tank | 110 l |
| AdBlue tank | 20 l |
| Gearbox | 12-speed forward and 12 reverse gear shuttles |
| Inverting device | Mechanical type |
| Differential lock | Electrohydraulic |
| Traction | 4 x 4 |
| Traction coupling 4x4 | Electrohydraulic |
| Rear power take-off | Independent with 540 / 1,000 rpm |
| Hydraulic pump flow | 60 l/min |
| Stacking capacity | 4,400 kg |
| Hydraulic couplings | Two rear pairs |
| Cab | ROPS and FOPS certified, increased visibility, pneumatic heated seat, seat belt, beacon, windshield with washer wiper, rear window with deflection, category 2 protection. |
| Air conditioning system | Automatic |
| Rear view mirrors | Yes |
| Working lights | 2 front / 2 rear |
| Radio equipment | Yes |
| Tires | front 380/85 R 24; rear 460/85 R 34 |
| Mudguards | to front / rear wheels |
| Net weight | 4,000 kg – without counterweight |
| Length | 4,590 mm |
| Height | 2,800 mm ± 50 mm |
| Width | 2,250 mm ± 50 mm |
| Wheelbase | 2,320 mm |
| Front axle gauge | 1,480 – 1,530 mm |
| Rear axle gauge | 1,780 – 1,830 mm |
| Ground clearance | 460 mm |
| Towing hook | Yes, adjustable in height |
| Rapid couplings | Category II |
| OPTIONAL | |
| Pneumatic system | Air compressor, trailer braking system |
| Front linkage | Lifting capacity of 2,200 kg |
| Front linkage with front power take-off (PTO) | Independent with 540 CV, 1,000 CV or 1,000 CVW |
| Front counterweight | 440 kg + front towing device |
| Additional rear hydraulic couplings | 2 pairs |
| LED headlights package | Yes |
| Passenger seat | Yes |



TECHNICAL CHARACTERISTICS

| | |
|----------------------------------|--------|
| Engine | Engine |
| Pollution standard | |
| Cylindrical capacity | |
| Engine power | |
| Maximum torque | |
| Air filter | |
| Fuel tank | |
| Gearbox | |
| Differential lock | |
| Traction | |
| Traction coupling 4x4 | |
| Rear power take-off | |
| Rear power take-off power | |
| Speed | |
| Hydrostatic steering system flow | |
| Hydraulic pump flow | |
| Stacking capacity | |
| Rear hydraulic couplings | |
| Cab | |
| Air conditioning system | |
| Rear view mirrors | |
| Tires | |
| Mudguards | |
| Net weight without counterweight | |
| Length | |
| Height | |
| Width | |
| Wheelbase | |
| Ground clearance | |
| Service brake | |
| Parking brake | |
| Front installation | |
| Electrical installation | |
| Passenger seat | |
| Draw bar | |

*Height and ground clearance may vary depending on tire size.

Warranty



TAG 24R | TAG 24RH

| | |
|--|---|
| Diesel engine, 3 cylinders, liquid cooled | |
| Stage V | |
| 1.175 cm ³ | |
| 24 HP (18 kW) | |
| 65 Nm at 2,100 rpm | |
| Dry with filtering element | |
| 231 | |
| 6 speed gears forward and 2 reverse | 2-range hydrostatic transmission provides unlimited variable speed from 0-25,8 km/h |
| mechanical | |
| 4 x 4 | |
| mechanical | electrohydraulic |
| Independent with 540 / 960 rpm with 6 grooves | |
| 21 HP at 2.600 rpm | |
| 1,02-22,9 km/h | 0-25,8 km/h |
| 13 l/min | |
| 18,2 l/min | |
| 650 kg | |
| 1 pair | |
| No | |
| No | |
| Yes | |
| Front 7-16, fixed rims | |
| Rear 11,2-20, adjustable rims | |
| Rear | |
| 923 kg | 956 kg |
| 3.122 mm | |
| 2.321 mm* | |
| 1.369 mm | |
| 417 mm* | |
| Multi disc, built-in oil bath (rear axis) | |
| Manually operated | |
| 3 x 20 kg - integrated towing hook | |
| 12 V general contact, 7 pin socket for trailer, lighting for traffic on public roads | |
| Mechanical suspension, seat belt | |
| Fixed | |

*Height and ground clearance may vary depending on tire size.

24 months or 1 500 hours of operation

The tractor will be delivered with an identity card issued by the Romanian Auto Registry (RAR card).



TAG 50C | TAG 50CH

| | |
|---|--|
| Diesel engine, 4 cylinders, liquid cooled | |
| Stage V | |
| 2.287 cm ³ | |
| 48 HP (36 kW) | |
| 155 Nm at 1.650 rpm | |
| Dry with filtering element | |
| 451 | |
| 3-range hydrostatic transmission provides unlimited variable speed from forward and 12 reverse | 3-range hydrostatic transmission provides unlimited variable speed from forward and 12 reverse 0-27,9 km/h |
| mechanical | |
| 4 x 4 | |
| mechanical | electrohydraulic |
| Independent, with 584/791 rpm, with 6 grooves | |
| 40 HP (30 kW) at 2.600 rpm | |
| 1,86-27,3 km/h | 1,86-27,9 km/h |
| 19 l/min | |
| 42 l/min | |
| 1.500 kg | |
| 2 pairs | |
| ROPS / FOPS certified, panoramic view | |
| Yes | |
| Yes | |
| Front 9,5-16, fixed rims | |
| Rear 13,6-26, adjustable rims | |
| Rear | |
| 1.955 kg | 1.951 kg |
| 3.421 mm | |
| 2.463 mm* | |
| 1.460-1.814 mm | |
| 1.806 mm | |
| 391 mm* | |
| Multi disc, built-in oil bath (rear axis) | |
| Manually operated | |
| 6 x 17 kg - integrated towing hook | |
| 12 V general contact, 12V socket in-cabin, 7 pin socket for trailer behind the cabin, lightning system for public roads driving | |
| Mechanical suspension, seat belt | |
| Fixed | |

*Height and ground clearance may vary depending on tire size.

24 months or 1 500 hours of operation

The tractor will be delivered with an identity card issued by the Romanian Auto Registry (RAR card).



TAG 60C | TAG 60CH

| | |
|---|--|
| Diesel engine, 4 cylinders, liquid cooled | |
| Stage V | |
| 2.287 cm ³ | |
| 58 HP (43 kW) | |
| 190 Nm at 1.600 rpm | |
| Dry with filtering element | |
| 451 | |
| 3-range hydrostatic transmission provides unlimited variable speed from forward and 12 reverse | 3-range hydrostatic transmission provides unlimited variable speed from forward and 12 reverse 0-27,9 km/h |
| mechanical | |
| 4 x 4 | |
| mechanical | electrohydraulic |
| Independent, with 584/791 rpm, with 6 grooves | |
| 47,5 HP (35,6 kW) at 2.600 rpm | |
| 1,86-27,3 km/h | 1,86-27,9 km/h |
| 19 l/min | |
| 42 l/min | |
| 1.500 kg | |
| 2 pairs | |
| ROPS / FOPS certified, panoramic view | |
| Yes | |
| Yes | |
| Front 9,5-16, fixed rims | |
| Rear 13,6-26, adjustable rims | |
| Rear | |
| 1.955 kg | 1.951 kg |
| 3.421 mm | |
| 2.463 mm* | |
| 1.460-1.814 mm | |
| 1.806 mm | |
| 391 mm* | |
| Multi disc, built-in oil bath (rear axis) | |
| Manually operated | |
| 6 x 17 kg - integrated towing hook | |
| 12 V general contact, 12V socket in-cabin, 7 pin socket for trailer behind the cabin, lightning system for public roads driving | |
| Mechanical suspension, seat belt | |
| Fixed | |

*Height and ground clearance may vary depending on tire size.

24 months or 1 500 hours of operation

The tractor will be delivered with an identity card issued by the Romanian Auto Registry (RAR card).

Reversible plough

| ALPLER | |
|-----------------------------|------------------------------------|
| Model | DPH123 DP123 DP143 DP144 DP145 |
| Number of troops (pcs) | 3 4 5 |
| Distance between beams (cm) | 80 75 |
| Clearance (cm) | 25-30-35-30-35 30-35-40 |
| Working width (cm) | 860 1070 1290 1670 |
| Weight (kg) | 90 110 130 160 |
| Power required (HP) | 26 28 |
| Working depth (cm) | |
| MOLDAGROTEHNICA | |
| Model | PRPO 3 PRPO 4 PRPO 5 PRXm 5 PRXm 6 |
| Number of troops (pcs) | 2+1 3+1 4+1 85 |
| Distance between beams (cm) | 78 |
| Clearance (cm) | 28-32-36-40 |
| Working width (cm) | 740 860 1160 2100 2500 |
| Weight (kg) | 90 130 160 180 250 |
| Power required (HP) | |



Plough

| AGRI SIGEVA | |
|-----------------------------|------------------------------------|
| Model | P2-20 P2-25 PR2-20 PRH2-20 PRH2-25 |
| Number of troops | 2 |
| Distance between beams (cm) | 50-60 75 50-60 75 |
| Clearance (cm) | 50 54 50 54 |
| Working width (cm) | 19-23 24-28 19-23 24-28 |
| Weight (kg) | 108 146 185 183 240 |
| Power required (HP) | 18-35 35-45 25-35 45-50 |
| Working depth (cm) | 20 25 20 30 |
| Reversible | No Yes |



Drill cultivator

| EURO-MASZ | |
|-------------------------|---|
| Model | AU25 AU27 AU30 AU36 AU42 AU50 AU56 |
| Working width (cm) | 2.5 2.7 3.0 3.6 4.2 5.0 5.6 |
| No. times (pcs) | 16 18 20 36 42 50 56 |
| Number of rollers (pcs) | 1 front + 1 rear 1 front + 2 rear |
| Power required (HP) | 45-70 60-70 70-100 90-110 100-120 120-150 130-180 |
| Weight (kg) | 560 600 630 1250 1350 1550 1640 |



Chisel plough

| MASCHIO GASPARDO PINOCCHIO | |
|----------------------------|--------------------------------------|
| Model | 130/3 170/5 200/5 250/5 300/7 |
| Active organs | 3 5 5 5 7 |
| Working width (cm) | 130 170 200 250 300 |
| Max. depth (cm) | 45 45 45 45 45 |
| Power required (HP) | 50-110 70-130 70-130 100-160 100-160 |



Disc harrow

| ALPLER | |
|-----------------------|------------------------|
| Model | BDH22 BDH24 BDH32 |
| Working width (m) | 2.7 3.0 4.0 |
| Working speed (km/h) | 6-10 |
| Disc diameter (mm) | 560 |
| Number of discs (pcs) | 22 24 32 |
| Weight (kg) | 1530 1750 2410 |
| Power required (HP) | 90-100 100-120 160-220 |



Disc harrow

| BOMET | |
|--------------------------|--|
| Model | TYPE "V"-1,8 m TYPE "X"-2,2 m TYPE "X"-2,9 m |
| Working width (m) | 1,8 2,2 2,9 |
| Working depth (cm) | 60-160 100 |
| Disc diameter (mm) | 460 |
| Number of elements (pcs) | 2 4 4 |
| Number of discs (pcs) | 16 24 32 |
| Weight (kg) | 370 615 760 |
| Power required (HP) | 48 50 65 |

| EURO-MASZ | |
|------------------------|---------------------------------------|
| Model | EBT 27 BT 30 EBT 40 EBT 40 H EBT 50 H |
| Working width (m) | 2.7 3.0 4.0 4.0 5.0 |
| Working speed (km/h) | 8-12 |
| Disc diameter (mm) | 510 |
| Number of discs (pcs) | 20 24 32 36 40 |
| Weight (kg) | 1050 1250 1200 2200 2400 |
| Power requirement (HP) | 75-120 85-120 100-150 120-170 140-180 |

Sowing machines

| HMS | |
|-----------------------------------|---|
| Model | MIYADISC 19 23 27 31 MIYADISC 27 31 MIYADISC 31 |
| Number of leg (psc) | 19 23 27 31 |
| Working width (mm) | 2500 3000 3500 4000 |
| Seed tank volume (l) | 340 400 435 465 |
| Fertilizer tank volume (l) | 305 370 400 425 |
| Volum buncar fãra fertilizãre (l) | 655 790 955 1030 |
| Tires | 600/16 |
| Weight (kg) | 1070 1250 1440 1590 |
| Power required (HP) | 70 80 100 110 |



Precision planter

| ALPLER | |
|--------------------------------------|-------------------------------|
| Model | 4R 6R DD 8R DD |
| Distance between sections (cm) | 45-70 |
| Volume of bunkers for seeds (l) | 4x25 6x25 8x25 |
| Volume of bunkers for fertilizer (l) | 2x160 2x200 4x160 |
| PTO (rpm) | 540 |
| Dimensions (mm) | l=3000 l=4000 l=2000 h=1600 |
| Weight (kg) | 1050 1300 1550 |
| Power required (HP) | 70 100 110 |
| Sowing coultter type | double disc |
| Fertilizer coultter type | double disc / optional patina |
| Surface counter | Yes |
| Control system | optional |



Agricultural trailer

| Model | IRUM | | | | | BICCHI | | | | |
|------------------------|----------------------------|---------------------------|------------------------|-------------------------|-------------------------|---------------------------|--------------------------|--------------------------|-------------------------|-------------------------|
| | MJ251 | MJ351 | MJ451 | MD601 | MD801 | MT601 | MT801 | MT1001 | BRT125 | BRT225 |
| Trailer type | monoax | 2 axes | 2 tandem axes | | | | | | | |
| Payload (kg) | 2550 | 3550 | 4550 | 6220 | 8290 | 6050 | 8250 | 10250 | 2050 | 3500 |
| Dimensions (LxHxh) (m) | L=3,15 l=1,88 h=0,95 | L=3,4 l=1,88 h=0,95 | L=3,7 l=2,09 h=1 | L=4,21 l=2,29 h=1 | L=4,21 l=2,29 h=1 | L=4,65 l=2,39 h=1,1 | L=4,65 l=2,4 h=1,2 | L=4,65 l=2,4 h=1,2 | L=2,5 l=1,5 h=0,8 | L=2,7 l=1,7 h=0,8 |
| 3-part tilting system | Yes | | | | | | | | | |
| Braking system | Pneumatic | | | | | | | | | |
| Tires | 10.0/75 15.3 | 11.5/80 15.3 | 400/60 15.5 | 11.5/80 15.3 | 11.5/80-15.3 | 400/60 15.5 | 400/60 15.5 | 500/50 17 | 10.0/75/ 15.3 10PR | 15.3 10PR |
| Support foot | mechanic | | | | | | | | | |



Mower

| Model | WITH DISCS | | | | | | |
|-----------------------|------------|-------------|------|-------------|------|-------------|-------|
| | DL3 | DL4/ DL3 | DL5 | DL6/ DL3 | DL7 | DL8/ DL3 | DL8L3 |
| Working width (mm) | 1300 | 1670 | 2050 | 2450 | 2800 | 3200 | 3200 |
| Number of discs (pcs) | 3 | 4 | 5 | 6 | 7 | 8 | 8 |
| Qty knives (pcs) | 6 | 8/12 | 10 | 12/18 | 14 | 16/24 | 70 |
| Power required (CP) | 25 | 35 | 40 | 45 | 50 | 70 | 70 |
| Weight (kg) | 310 | 385 | 420 | 460 | 560 | 650 | 650 |



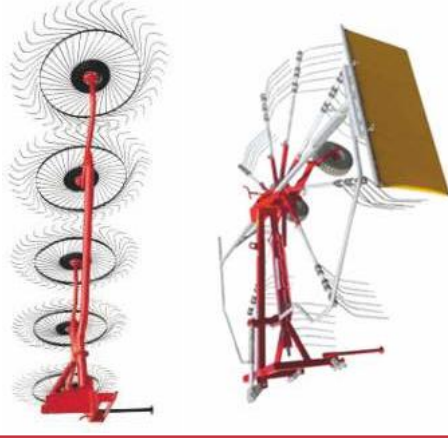
WITH DRUMS

| Model | LISICKI | | |
|-----------------------|-----------|---------|---------|
| | Z-178/1/1 | Z-178/1 | Z-178/2 |
| Working width (mm) | 1000 | 1350 | 1650 |
| Number of drums (pcs) | 2 | 2 | 2 |
| Qty knives (pcs) | 6 | 6 | 6 |
| Power required (CP) | 16 | 30 | 45 |
| Weight (kg) | 100 | 310 | 365 |



Rake

| Model | Z-240 | Z-250 | MT 350 |
|---------------------|-------|-------|----------|
| Type | "Sun" | | "Spider" |
| Number of rotors | 4 | 5 | 1 |
| Rotor diameter (cm) | 140 | 120 | 350 |
| Number of arms | - | - | 9 |



Rotary tiller

| Model | BOMET | | | | |
|--------------------|----------|--------|--------|--------|--------|
| | F25F/125 | U540/4 | U540/3 | U540/1 | U540/2 |
| Working width (m) | 1,25 | 1,2 | 1,4 | 1,6 | 1,8 |
| Maximum depth (mm) | 150 | 120 | | | |
| Number of teeth | 24 | 30 | 36 | 42 | 48 |
| Number of rotors | 6 | 5 | 6 | 7 | 8 |
| Weight (kg) | 175 | 305 | 320 | 345 | 365 |
| Power req. (HP) | 20 | 25 | 30 | 35 | 45 |



Slurry tanker

| Model | MEPROZET | | | | |
|-------------------------|----------------------------|----------------------------|----------------------------|----------------------------|----------------------------|
| | PN-30 | PN-40 | PN-50 | PN-1/12A | PN-3/18 |
| Tank capacity (l) | 3000 | 4300 | 5000 | 12000 | 18000 |
| Filling time (min) | 2 | 2,5 | 3 | 5 | 7 |
| Weight (kg) | 1020 | 1250 | 1350 | 4200 | 6670 |
| Tires | 11.5x15.3 | 400/60-15.5 | 500/50x17 | 20.5 R22.5 | |
| Power required (HP) | 30 | 40 | 50 | 120 | 180 |
| Dimensions (LxHxh) (mm) | L=4100 l=1880 h=2310 | L=5080 l=1920 h=2310 | L=5080 l=2100 h=2410 | L=6800 l=2550 h=3100 | L=8895 l=2700 h=3560 |



Baler

| Model | CUBE BALER | | PK 4010 KOSTKA |
|--------------------------------------|---------------------------|----------|-------------------|
| | SIPMA | KOSTKA | |
| Pick-up width (mm) | 1780 | 300-1300 | |
| Bale length - smooth adjustment (mm) | 38 | | |
| Propylene twine (m/kg) | 300-400 | | |
| Dimensions (mm) | L=4900; l=2500; h=1600 | | |
| Weight (kg) | 1555 | 1560 | |



ROUND BALER

| Model | MASCCHIO | | URSUS |
|---------------------|----------------------------|----------------------------|-------|
| | GASPARDO | Z-543 | |
| Pick-up width (mm) | 2000 | 1900 | |
| Bale dimension (mm) | 1200x1200 | | |
| Pickup | Hydraulic | | |
| PTO | 540rpm | | |
| Power required (HP) | 40 | 50 | |
| Binding system | twine / net | | |
| Dimensions (mm) | L=3000 l=2150 h=2000 | L=3535 l=2450 h=2100 | |

Front-end loader

| Model | IRUM | | | | BL455L QB |
|-----------------------|---|--------------|--|--------------|-------------------|
| | 5900 | 01-MM | 01 | 02 | |
| Lifting height (mm) | 2250 | 3220 | 3100 | 3570 | 3900 |
| Lifting capacity (kg) | 800 | 1300 | 1600 | 1600 | 1190 |
| Joystick | Yes | | | | |
| Volume bucket (mm) | 1400 | | | | |
| Compatible | 321, 320.4, 422.1, TAG 50C, TAG 50CH, TAG 60C, TAG 60CH | Hattat C3080 | 020, 092, 092.1, 025, Hattat A110, TAGRO | 1221, 1221.3 | TAG 24R, TAG 24RH |
| | | 422.4, 622 | 2000 | 1400 | 2000 |
| | | | | | TAG 74C |



Snow blade

| Model | IRUM | | | MT 2600 V PRO-M |
|--------------------------|----------|---------|-----------|-----------------|
| | MT 1850 | MT 2600 | MT 2600 V | |
| Working width (mm) | 1850 | 2600 | 2600 | 2600 |
| Height (mm) | 750 | 990 | 990 | 580 |
| Weight (kg) | 320 | 530 | 530 | 580 |
| Blade type | Straight | | | |
| Gauge light installation | Yes | | | |
| Adjustable copy wheel | No | Yes | No | Yes |
| L/R hydraulic adjustment | 30° | 30° | 35° | 35° |



Snowblower

| Model | AKPIL | |
|------------------------|-----------|-----------|
| | STRATUS 1 | STRATUS 2 |
| Working width (mm) | 2200 | 2200 |
| Number of snails (pcs) | 1 | 2 |
| Weight (kg) | 450 | 600 |
| Power required (HP) | 70 | 80 |
| PTO drive | Yes | |
| Hydraulic adjustment | Optional | |



Front loader accessories

| IRUM | |
|------------------------------|---------------------------|
| Bucket with teeth 1.4-2 m | Pit silage grab 1.5-1.8 m |
| Bucket without teeth 1.4-2 m | Silage bucket 1.5-1.8 m |
| Bale grapple up to 1800 mm | Multifunctional bucket |
| Mixed pallet/bale fork | Snow blade |
| | Grapple |



Snow plow / Grader

| Working width (mm) | SPAWEK | | 3000 |
|---------------------------|---------|--------------|-----------|
| | 2700 | 3000 | |
| Equipment type | mounted | semi-mounted | metal |
| Blade type | rubber | mechanic | hydraulic |
| Blade rotation adjustment | 180° | | |
| Left/right adjustment | | | |



Non-slip spreader

| Model | COSMO | | | HYDRAMET | | |
|---------------------|-------------------------------------|----------|----------|----------|----------|----------|
| | PLS 500 | PIAS 1.8 | PIAS 2.1 | PIAS 2.1 | PIAS 2.4 | PIAS 2.4 |
| Volume (l) | 500 | 750 | 850 | 1500 | 1500 | 1500 |
| Weight (kg) | 63 | 400 | 500 | 700 | 700 | 700 |
| Spread width (m) | 1-13 | 1.8 | 2.1 | 2.4 | 2.4 | 2.4 |
| Power required (HP) | 20 | 90 | 100 | 130 | 130 | 130 |
| Structure | Plastic cone, stainless steel parts | | | | | |
| Dosage adjustment | Mechanic | | | | | |
| Self-loading system | No | | | | | |
| | High quality steel | | | | | |
| | Hydraulic | | | | | |
| | Yes | | | | | |



Forestry adaptation

| TRUMF | |
|------------------|--------------------------------------|
| Window grille | Door grille |
| Projector grille | Grille for turn signals / taillights |
| 2 hood bumpers | Reinforced rims |



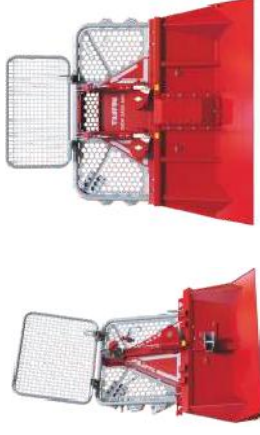
Forestry trailer with loading arm

| FTG | |
|------------------------------------|--|
| Model | FB 50 arm FB42L FB 90 arm FB63 FB 90 2WD arm FB63T FB 100 arm FB63T |
| Payload capacity (kg) | 5000 |
| Loading length (m) | 2,9 |
| Tires | 11,5/80-15,3 |
| Arm length (m) | 4,2 |
| Lifting capacity at maximum length | 500 kg (net) |
| | 510 kg (net) |
| | 455 kg (net) |
| | 6,3 (net) |
| | 490 kg (net) |
| | 6,9 (net) |



Forestry winch

| TAJFON | |
|---------------------------|--|
| Model | EGV 35 A EGV 45 A EGV 55 A EGV 65 A EGV 85 A EGV 85 AHK EGV 105 A EGV 105 AHK EGV 125 A EGV 125 AHK EGV 190,06 |
| Traction force (kN) | 35 45 55 65 85 105 2x55 |
| Braking force (kN) | 44 56 69 81 106 125 2x69 |
| Transmission ratio | 1/7,5 18,89 |
| Weight without cable (kg) | 240 330 350 365 540 590 800 690 |
| Maximum cable length | Ø6-83m Ø1046m Ø11-78m Ø11-55m |
| Shield width (mm) | 1210 1400 |
| Height (mm) | 2000 2300 |



Firewood processor

| TAJFON | |
|---------------------------|--|
| Model | RCA 320 RCA 380 RCA 400 RCA 480 JOY |
| Length of cut log (cm) | 25-50 |
| Max. diameter of log (cm) | 10-32 10-38 5-40 5-48 |
| Sawbar | Oregon 16" Oregon 17" Oregon 24" |
| Splitting force (t) | 10 15 25 |
| Power required (HP) | 40 for operating the machine min. 80 for transportation |
| Dimensions (Lxbh) (mm) | L=2350 l=2350 h=2390 L=2350 l=2350 h=2480 L=2410 l=2410 h=2330 |



Log splitter

| ZANON | |
|----------------------------|---|
| Model | SLE9 SVT12 SVT14 SVT16 SVT25 |
| Splitting force (t) | 9 12 14 16 25 |
| Maximum length of log (cm) | 50 67/122 110 67/110 110 |
| Weight (kg) | 100 220 225 360/365/250-275 650 |
| Power required (HP) | 30-60 30-90 |
| Type | Vertical Horizontal |



Mulcher

| ZANON | |
|-------------------------|--|
| Model | TFX1300 TFX1500 TFX1700 TFX1900 |
| Working width (mm) | 1300 1500 1700 1900 |
| Weight (kg) | 260 290 320 350 |
| Number of hammers (pcs) | 36/18 44/22 48/24 56/28 |
| ZANON | |
| Model | TMO1300 TMO1500 TMO1700 TMO2250 |
| Working width (mm) | 1300 1500 1700 2250 |
| Weight (kg) | 300 340 380 1260 |
| Number of hammers (pcs) | 36/18 44/22 48/24 40 |
| ZANON | |
| Model | TRF1700 TFA2000 TFZ2250 TFZ2500 |
| Working width (mm) | 1700 2000 2250 2500 |
| Weight (kg) | 400 620 532 590 |
| Number of hammers (pcs) | 48/24 48/24 56/28 64/32 |
| AGRIMASTER | |
| Model | XB 130 S GREEN SHARK 450-100 |
| Working width (mm) | 1320 1000 |
| Weight (kg) | 202 460 |
| Number of hammers (pcs) | 16 32 |
| Arm length (cm) | - 468 |



Front linkage

| ZANON | |
|-----------------------|--|
| Model | MT MT mini |
| Number of cylinders | 2 |
| Lifting capacity (kg) | 1500 500 1100 2500 2200 |
| Compatible models | 820 422,1 820;892; 952; 1025 Hattat A110; T4.00 TAGRO |



Backhoe

| DANIELE GIRAUDDO | |
|-----------------------|--------------------------------------|
| Model | DG150R DG200R DG250R DG300R |
| Digging depth (mm) | 2100 2500 2945 3315 |
| Unloading height (mm) | 1750 2100 2500 2895 |
| Digging distance (mm) | 2900 3300 3810 4345 |
| Weight (kg) | 510 600 770 940 |
| Power required (HP) | 50-80 60-90 70-100 120-180 |
| Chassis width (mm) | 1500 1500 1800 2000 |
| Standard bucket (mm) | 300 400 400 500 |



IRUM sells original spare parts for **the entire range of TAGRO, TAG and BELARUS tractors.**

Engine



Transmission



Cooling system



Gearbox



Clutch



Electrical components



Braking system



Consumables and accessories



Service and maintenance

IRUM offers full service, warranty, and post-warranty services, providing original spare parts for TAGRO, TAG and BELARUS agricultural tractors.

The Technical Support Service is available 24/24 hours, ensuring national coverage, having several intervention teams, equipped with specific diagnostic and intervention equipment, ready to come to your aid.



Research and Development Centre for Agricultural and Forestry Equipment

IRUM Reghin inaugurated on September 11, 2015, the iFOR Research and Development Centre, the first entity of its kind established by a Romanian entrepreneur after 1990, in the field of agribusiness and forestry. iFOR means an investment of EUR 2.66 million, achieved in 21 months, partly financed by a European project, amounting to EUR 1.43 million, of which non-refundable EUR 496,000.

Following the upward course of development in recent years, SC IRUM SA has moved to a new upper phase, focusing on the ever-increasing introduction of Information technology and the accumulation of new knowledge. The team of the centre, consisting of sciences PhDs, engineers and technicians is able to develop concrete solutions, optimized for a wide range of agricultural and forestry equipment with superior technical economic characteristics, capable to meet the productivity requirements.



TAF S5



IRUM
Transylvanian
tractors

www.irus.ro

ENGINE

| | |
|-------------------|----------------------------------|
| Engine | Perkins 4 cyl. Common Rail Turbo |
| Emissions | Tier 5 |
| Output | 100 kW (136 HP) / 2200 rpm |
| Max torque | 550 Nm @ 1500 rpm |
| Capacity | 3,6 l |

HYDRAULICS

| | |
|-------------------------|----------------------------|
| Pump output | 37,9 cm ³ / rot |
| Working pressure | 210 bar |
| Tank | 100 l |

WINCH

| | |
|-----------------|--|
| Standard | IRUM double-drum air operated 2x7T |
| Optional | TCM double drum hydraulic operated 2x14T |

BRAKE

Multi-disc brake system in oil bath
Spring parking brake (SAHR)

STEERING

36° articulated steering

TYRES

| | |
|-----------------|---------|
| Standard | 18.4x26 |
| Optional | 23.1x26 |

TRANSMISSION

| | |
|------------------|---------------------------------|
| 2 options | PowerShift transmission Allison |
| | Manual transmission Eaton |
| | 2 step transfer gearbox |

DIMENSIONS

| | |
|--|---------------|
| Vehicle length | max 6300 mm |
| | minim 6000 mm |
| Vehicle width | max 2750 mm |
| | minim 2250 mm |
| Vehicle height | max 3000 mm |
| | minim 2800 mm |
| Front overhang | max 2200 mm |
| | minim 1580 mm |
| Front attack angle | |
| Blade on chasis | 32,35° |
| Blade on pivoting axle | 29,42° |
| Rear overhang | max 1200 mm |
| | minim 900 mm |
| Max departure angle | |
| Mobile shield option | 37,6° |
| Fixed shield | 32,7° |
| Ground clearance | |
| Maxim (23.1/26) | 500 mm |
| Minim (18.4/26) | 400 mm |
| Wheelbase | 2930 mm |
| Track | max 2155 mm |
| | minim 1950 mm |
| Chasis steering | 37,6° |
| Minimum turning radius (exterior) | 5900 mm |

AXLES

| | |
|------------------|----------------------------|
| 2 options | 9.2 to NAF planetary axles |
| | 14 to IRUM planetary axles |
| | Differential lock |
| | Pivoting front axle |

ELECTRICS

12V, 120A alternator

INSTRUMENTS

Tachometer with operating hour counter, coolant temperature, tank gauge, indicator lights
Secondary screen with vehicle air pressure, gearbox status, engine load

EQUIPMENT

| | |
|--------------------|---|
| Front blade | Chasis mounted front blade |
| | With mounting on pivoting front axle |
| Rear shield | Mobile |
| | Fixed with under chasis anchoring blade |
| Optional | Rear grapple |

SPECIAL EQUIPMENT

Winch radio control
Clamping claws for front blades
Extra working lights
Trailer hitch
Trailer braking system

WEIGHT

| | |
|--|----------------|
| Base vehicle weight | max 9300 kg |
| <i>*Vehicle weight si directly related to the final configuration of the application</i> | minim 8500 kg |
| Axle weight distribution | |
| Front axle | 5000 - 5500 kg |
| Rear axle | 3500 - 4000 kg |
| Max permissible load | 12000 kg |
| Max load per axle | |
| Front axle | 7000 kg |
| Rear axle | 7000 kg |
| Axle weight distribution limits | |
| Front axle | minim 30% |
| Rear axle | minim 30% |

SPEED

| | |
|---------------------------|---------|
| Max speed declared | 30 km/h |
| Max reverse speed | 5 km/h |

FUEL TANK

| | |
|--------------------|------|
| Diesel tank | 90 l |
| AdBlue tank | 19 l |

CABIN

Rubber-mounted, soundproofed
ROPS,OPS, FOPS homologated
Heated seat with air suspension
Cabin heating
Scratch resistant polycarbonate windows
Air conditioning

www.irusm.ro

IRUM dealers

- FRANCE
- BELGIUM
- LUXEMBOURG
- GERMANY
- HUNGARY
- BULGARIA
- POLAND
- SPAIN
- PORTUGAL
- SLOVAKIA
- SOUTH AFRICA
- CHILE
- BRAZILIA
- URUGUAY
- ARGENTINA
- PARAGUAY
- BOLIVIA
- COLUMBIA
- ECUADOR
- PERU
- VENEZUELA
- PANAMA
- GUATEMALA
- GOSTA RICA
- GUYANA
- SURINAME
- FRENCH GUYANA
- HONDURAS
- NICARAGUA
- MEXICO



IRUM
European
tractors



TAF 690 S5



Y2-04.2022

S.C. IRUM S.A.
Axente Sever 6
Reghin, 545300, RO
Telefon
004-0365-450.001
Fax
004-0377-101.431
E-mail
office@irusm.ro

www.irusm.ro



ENGINE

| | |
|-------------------|----------------------------------|
| Engine | Perkins 4 cyl. Common Rail Turbo |
| Emissions | Tier 5 |
| Output | 100 kW (136 HP) / 2200 rpm |
| Max torque | 550Nm @ 1500rpm |
| Capacity | 3.6 liters |

HYDRAULICS

| | |
|-------------------------|----------------------------|
| Pump output | 37.9 cm ³ / rot |
| Working pressure | 210 bar |
| Tank | 100 liters |

WINCH

| | |
|-----------------|--|
| Standard | IRUM double-drum air operated 2x7T |
| Optional | TCM double drum hydraulic operated 2X14T |

BRAKE

| | |
|--|------------------------------------|
| | Multi-disk braking system in oil |
| | Spring-loaded parking brake (SAHR) |

STEERING

| | |
|--|--------------------------|
| | 36° articulated steering |
|--|--------------------------|

TYRES

| | |
|-----------------|---------|
| Standard | 18.4x26 |
| Optional | 23.1x26 |



TRANSMISSION

| | |
|------------------|-------------------------|
| 2 options | Allison 6+1 |
| | Manual transmission |
| | Eaton 5+1 |
| | 2 step transfer gearbox |

DIMENSIONS

| | |
|-----------------------|---------------|
| Vehicle length | max 6300 mm |
| | minim 6000 mm |
| Vehicle width | max 2750 mm |
| | minim 2250 mm |
| Vehicle height | max 3000 mm |
| | minim 2800 mm |
| Front overhang | max 2200 mm |
| | minim 1580 mm |

| | |
|----------------------------|--------------|
| Front attack angle | |
| Blade on chasis | 32,35° |
| Blade on pivoting axle | 29,42° |
| Rear overhang | max 1200 mm |
| | minim 900 mm |
| Max departure angle | |
| Mobile shield option | 37,6° |
| Fixed shield | 32,7° |

| | |
|--|---------------|
| Ground clearance | |
| Maxim (23.1/26) | 500 mm |
| Minim (18.4/26) | 400 mm |
| Wheelbase | 2930 mm |
| Gauge | max 2155 mm |
| | minim 1950 mm |
| Chasis steering | 37,6° |
| Minimum turning radius (exterior) | 5900 mm |



WEIGHT

| | |
|---|----------------|
| Base vehicle weight | max 9300 kg |
| <i>*Vehicle weight, is directly related to the final configuration of the application</i> | minim 8500 kg |
| Axle weight distribution | |
| Front axle | 5000 - 5500 kg |
| Rear axle | 3500 - 4000 kg |
| Max permissible load | 12000 kg |
| Max load per axle | |
| Front axle | 7000 kg |
| Rear axle | 7000 kg |
| Axle weight distribution limits | |
| Front axle | minim 30% |
| Rear axle | minim 30% |

SPEED

| | |
|---------------------------|---------|
| Max speed declared | 30 km/h |
| Max reverse speed | 5 km/h |

FUEL TANK

| | |
|--------------------|-----------|
| Diesel tank | 90 liters |
| AdBlue tank | 19 liters |

CABIN

| | |
|-----------------|---|
| | Rubber-mounted, soundproofed |
| | ROPS,OPS, FOPS homologated |
| | Heated seat with air suspension |
| | Cabin heating |
| | Scratch resistant polycarbonate windows |
| Optional | Air conditioning |

AXLES

| | |
|------------------|---------------------------|
| 2 options | NAF planetary axles 9.5 t |
| | IRUM planetary axles 14 t |
| | Differential lock |
| | Pivoting front axle |

ELECTRICS

| | |
|--|----------------------|
| | 12V, 120A alternator |
|--|----------------------|

INSTRUMENTS

| | |
|--|---|
| | Tachometer with operating hour counter, |
| | coolant temperature, tank gauge, indicator lights |
| | Secondary screen with vehicle air pressure, |
| | gearbox status, engine load |

EQUIPMENT

| | |
|--------------------|---|
| Front blade | Chasis mounted front blade |
| | With mounting on pivoting front axle |
| Rear shield | Mobile |
| | Fixed with under chasis anchoring blade |
| Optional | Rear grapple |

SPECIAL EQUIPMENT

| | |
|--|---------------------------------|
| | Winch radio control |
| | Clamping claws for front blades |
| | Extra working lights |
| | Trailer hitch |
| | Trailer braking system |